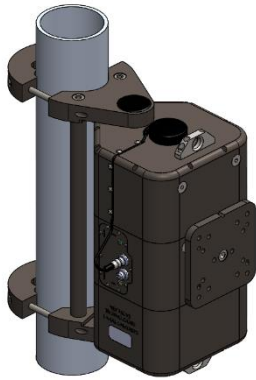


# LinkAlign-60EBP3

AUTO ACQUISITION ANTENNA POSITIONER FOR MICROWAVE LINE OF SIGHT



The LinkAlign-60EBP3 is a Power Over Ethernet (PoE) antenna positioner designed from the ground up to point and automatically peak directional side arm mount antennas for microwave 70–90GHz (E-Band) links.

E-Band systems have very narrow beam widths which require very precise pointing and stable masts to maintain a high quality link. Often these links come out of alignment or become less optimized due to thermal expansion of the tower, wind events, or other environmental conditions. The LinkAlign-60EBP3 corrects for these disturbances to maintain the highest Quality of Service available without the down time and reoccurring cost due to manual realignment. Initially align your link using a smart phone, computer, or optional joystick. Once aligned, our software will maintain your link automatically based on an RSSI threshold setting or peaked on demand from anywhere on your network.

The LinkAlign-60EBP3 is typically paired with 3 ft side arm mount antennas, payloads up to 200 lbs (90.7 kg), and offers +/-30° of azimuth and elevation range. Download the Interface Control Drawing (ICD) for details.

## TECHNICAL SPECIFICATIONS - LinkAlign-60EBP3

Power	Power Over Ethernet (POE) 48VDC-56VDC Supply Included
Material / Finish	Aluminum with stainless steel hardware / Hard coat anodize
Positioner Travel	
Azimuth	60° (+/-30°)
Elevation	60° (+/-30°)
Positioner Drive Rate	
Azimuth	Variable, up to 0.1°/sec no load
Elevation	Variable, up to 0.1°/sec no load
Temperature	
Operational	-22 to 140°F (-30 to 60°C)
Survival	-40 to 158°F (-40 to 70°C)
Feedback Resolution	0.01°
Backlash (Az / El)	less than 0.05° in both axes
Torque	
Operational (both axes)	100 ft-lbs (135.6 Nm)
Survival (both axes)	400 ft-lbs (542.3 Nm)
Payload	200 lbs (90.7 kg)
Dimensions	Height: 16.86" (42.8 cm), Width: 11.50" (29.2 cm), Depth*: 13.29" (33.8 cm)
Weight	51 lbs (23.0 kg)
Mounting Interface	Mounts to masts O.D. ranging from 3 - 4.5"
Antenna Mount Options	5/16-18 threaded holes for side arm mount antennas (See ICD for details)
Communication Interface	
User Interfaces	Web based hosted internal to unit, Pelco D, or Nextmove proprietary command protocol
Ethernet	10/100 Ethernet
Serial	RS-485

\* Depth measured from center of a 4.5 in O.D. mast